



# Digital Enablement for HPE NonStop



Unlike new development and software packaging options, application modernization can be undertaken piecemeal, while still allowing the business to use the application's needed technical functionality. Additionally, modernization can maintain all core business functionality. In evaluating where to start, consider the following three areas to address user's needs:

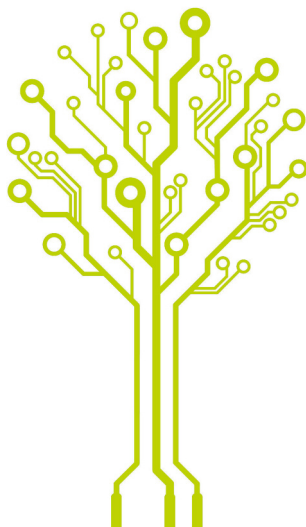
1

## Rich user interface (UI)

Updating from a green screen, which is common in many NonStop applications, to a modern interface will improve usability and the user experience (e.g., reduce user error rate). It will make training more effective and inspire confidence from senior management, customers, and employees.

comforte's JPath will translate green screens into Windows like user interfaces.

[www.comforte.com/jpath](http://www.comforte.com/jpath)



2

## Information layer (e.g., databases)

Many legacy applications predate Structured Query Language (SQL), which is now the de facto standard for databases.

SQL serves as a common language that allows applications to easily integrate and exchange information across different databases. Conversely, some of these proven legacy applications use the Enscribe language. Enscribe cannot easily integrate with SQL databases without laborious 'translations' of the Enscribe-formatted data into SQL format (and back again).

Every 'translation' required to exchange information takes time and consumes resources. Converting databases to SQL is an important first step to modernizing applications.

comforte's Escort SQL provides an effective migration path from Enscribe to SQL databases.

[www.comforte.com/escort-sql](http://www.comforte.com/escort-sql)

3

## Service orientation and integration

Service-oriented architectures (SOAs), most often deployed as web services, have exploded over the last decade. Many important internal enterprise IT services are provisioned as services. Large global enterprises ranging from Twitter to Experian build standard interfaces into their applications so that anyone can 'consume the service.' Updating an application hosted on HPE NonStop to become either a service consumer or a service provider will drastically increase the overall value of the application to a business.

comforte's Client Server Link (CSL) solution provides this web services capability but also the option to integrate the application using powerful APIs.

[www.comforte.com/CSL](http://www.comforte.com/CSL)



[www.comforte.com/contact](http://www.comforte.com/contact)